

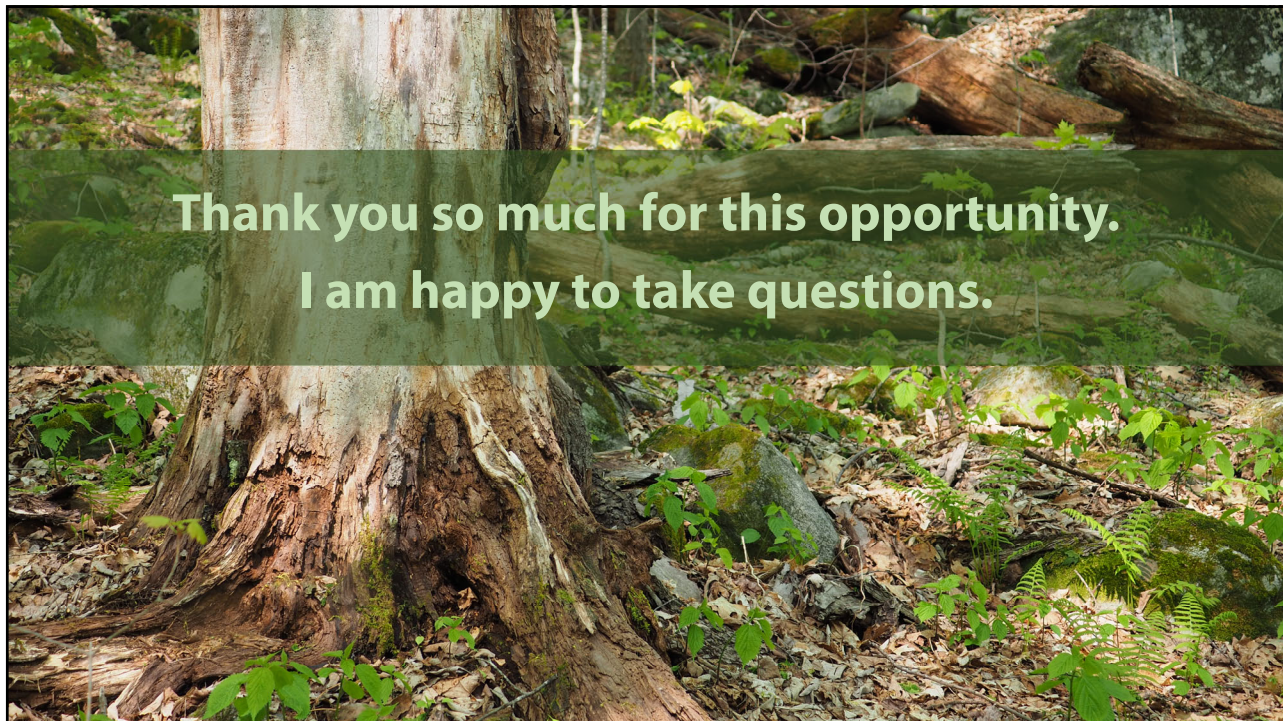
## We are enrolled in Current Use Programs in 3 States

Maine	Vermont	New Hampshire
<ul style="list-style-type: none"> <li>• Tree Growth &amp; Open Space</li> <li>• 5 categories, cumulative tax benefit</li> <li>• Requires OS app, attachments and map.</li> <li>• 10,000-acre max</li> </ul>	<ul style="list-style-type: none"> <li>• UVA, enrolled as non-profit</li> <li>• Requires forms CU-301, PVR-321, PVR-322</li> <li>• Management plan and map required</li> </ul>	<ul style="list-style-type: none"> <li>• Current Use, enrolled as "unmanaged"</li> <li>• Requires forms A-10 (to enroll) or CU-18 to change status</li> <li>• Requires map</li> <li>• 20% rec adjustment</li> </ul>



## **Forever-Wild Easements 101**

- Monitored at least annually
- Require a management plan (10 year)
- Review management plan for CE compliance
- Annual landowner outreach
- Track when the property changes hands and establish a relationship with new landowners



**Thank you so much for this opportunity.  
I am happy to take questions.**